

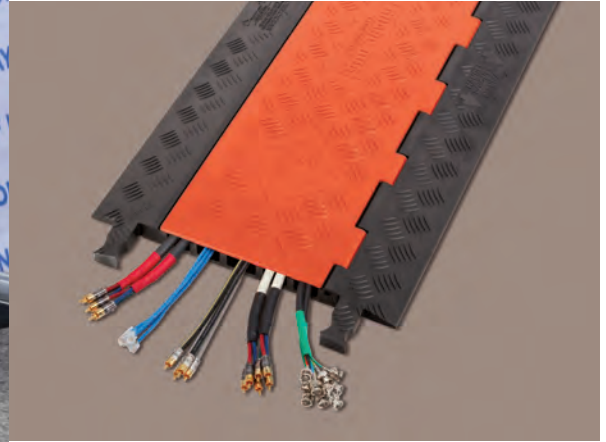
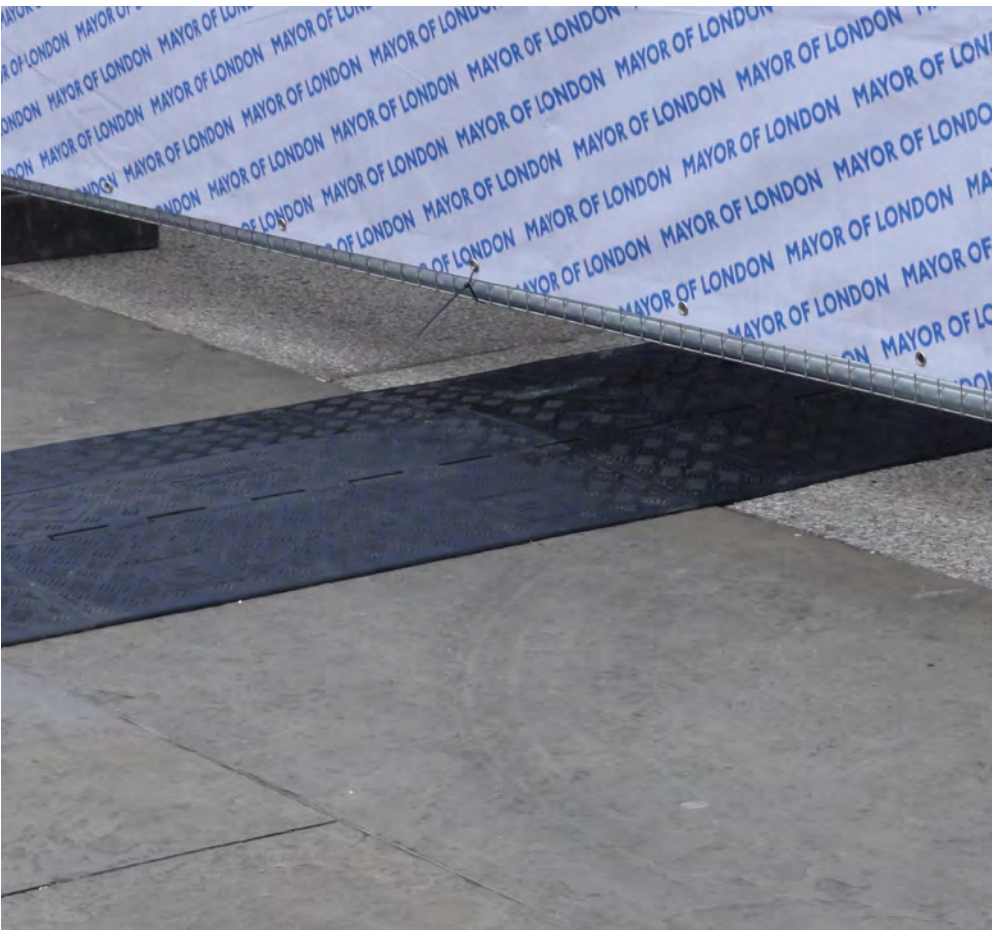
# LINEBACKER®

CABLE MANAGEMENT

## GUARD DOG SERIES LOW PROFILE 5-CHANNEL CABLE PROTECTOR

PRODUCT INFORMATION BROCHURE





PICTURED: GD1X75 IN USE (LEFT)  
GD5X75-ST IN USE (TOP)

Checkers' Linebacker Cable Management offers the most extensive line of high performance cable/hose protection products in the world. These durable cable protection systems provide a safer method of passage for pedestrian traffic, vehicles and heavy duty equipment while protecting valuable electrical cables, cords and hose lines from damage.

To fit the needs of a wide variety of applications, we offer lidded models, drop over models, open top models, and low profile models constructed from all-weather polyurethane. We also offer rubber duct models for light applications.

- **World's largest cable protector manufacturer**
- **Linebacker cable management systems are manufactured in the USA in Broomfield, CO**
- **We offer extensive accessories, such as ADA/DDA compliant access ramps, protector bridges, 45 & 90 turns and end caps**
- **Polyurethane construction is lighter and more durable than rubber imitations in extreme weather conditions**
- **Universal safety colors alerting all type of traffic to the product's presence**
- **Satisfies state and federal regulatory agencies**
- **Customized solutions, including logos molded into the product**
- **Multiple channel options so each cable and hose can have its own dedicated channel**
- **Non-conductive material insulates and protects cords/cable, as well as people**

**GUARD DOG SERIES LOW PROFILE** models are the most compact top-loading cable protectors on the market. These protectors provide a safer crossing for vehicle and pedestrian traffic, while still maintaining a high load-bearing capacity for heavy equipment. The Low Profile models are available with your choice of standard or ADA/DDA compliant ramps.

**Material:** UV Stabilized Polyurethane

- Protects cables and hoses up to .75" outside dia.
- Dog Bone Connectors to extend to any desired length
- Reinforced hinged lid for easy cable placement
- Available with or without ADA/DDA Accessibility Ramps
- Patented 5-bar tread surface for maximum traction
- ADA Ramp model features a load capacity of 68,000 lbs./Axle (30,844 kg)
- Standard Ramp model features a load capacity of 48,000 lbs./Axle (21,772 kg)
- Available with an orange or black lid



MODEL: GD5X75

**⚠ WARNING:** This product can expose you to chemicals including Carbon Black, Titanium Dioxide, Formaldehyde, and Benzyl Butyl Phthalate, which are known to the State of California to cause cancer and birth defects or other reproductive harm. For more information go to [www.P65Warnings.ca.gov](http://www.P65Warnings.ca.gov).

**APPLICATIONS**

- Civil Engineering
- Construction
- Military Sites
- Infrastructure and Utilities Maintenance
- Transmission
- Oil and Gas

## SPECIFICATIONS

Model	Length	Width	Height	Channel Width	Maximum Outside Diameter	Weight
GD5X75	36 in. (91.4 cm)	16.9 in. (43.0 cm)	1.25 in. (3.18 cm)	1.28 in. (3.25 cm)	.75 in. (1.9 cm)	14.75 lb. (6.69 kg)
GD5X75-ST	36 in. (91.44 cm)	33.3 in. (84.6 cm)	1.25 in. (3.18 cm)	1.28 in. (3.25 cm)	.75 in. (1.9 cm)	24.5 lb. (11.11 kg)

## ACCESSORIES

Model	Description	Weight
CPRPKIT.75-20	Anti-Slip Rubber Pad Kit for all Guard Dog Series Low Profile Protectors with Standard Ramps (includes 20 anti-slip rubber pads)	.11 lb. (.05 kg)
CPGLUE	½ oz. Bottle of Checkers' Clear Super Glue (best if kept refrigerated). Use for permanent application of Anti-Slip Rubber Pads	.07 lb. (.032 kg)
CPCARPETKIT-3	Carpet Kit with VELCRO® Brand Fasteners for all Guard Dog Series Low Profile Protectors with Standard Ramps (includes two 37" x .25" Black Traction Strips and a ½ oz. Bottle of Checkers' Clear Super Glue)	.09 lb. (.041 kg)





**LINEBACKER®**

620 Compton St  
Broomfield, CO 80020

**PHONE:** (800) 438-9336

**FAX:** (720) 890-4858

**EMAIL:** sales@checkers-safety.com

[www.linebacker-safety.com](http://www.linebacker-safety.com)

A PRODUCT OF:



For more information visit: [www.checkers-safety.com](http://www.checkers-safety.com)

Checkers Safety Group is committed to providing revolutionary product designs and visionary safety solutions that protect people, assets, and the environment.

CHECKERS' FAMILY OF BRANDS:

