

LINEBACKER[®]

CABLE MANAGEMENT

YELLOW JACKET SERIES 3-CHANNEL CABLE PROTECTORS PRODUCT INFORMATION BROCHURE





PICTURED: YJ5-125 IN USE)

Checkers' Linebacker Cable Management offers the most extensive line of high performance cable/hose protection products in the world. These durable cable protection systems provide a safer method of passage for pedestrian traffic, vehicles and heavy duty equipment while protecting valuable electrical cables, cords and hose lines from damage.

To fit the needs of a wide variety of applications, we offer lidded models, drop over models, open top models, and low profile models constructed from all-weather polyurethane. We also offer rubber duct models for light applications.

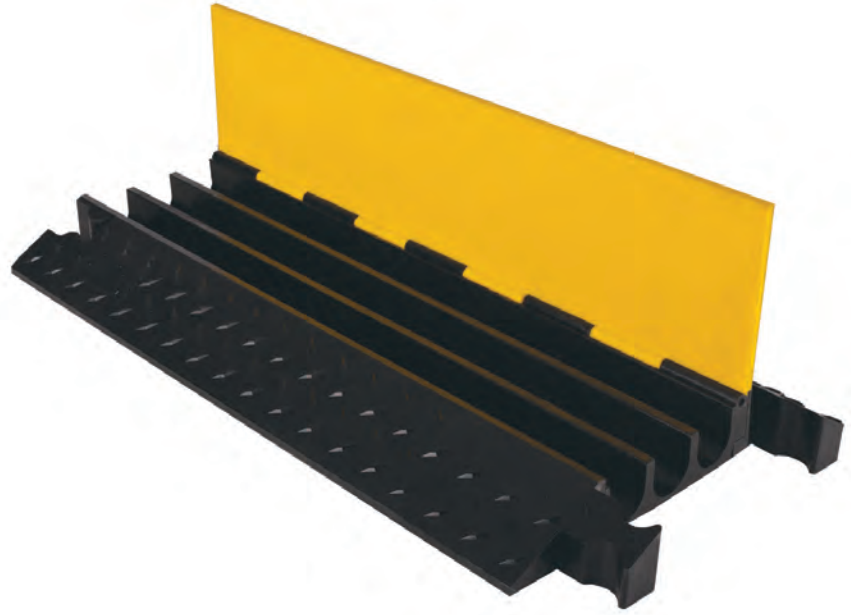
- **World's largest cable protector manufacturer**
- **Linebacker cable management systems are manufactured in the USA in Broomfield, CO**
- **We offer extensive accessories, such as ADA/DDA compliant access ramps, protector bridges, 45 & 90 turns and end caps**
- **Polyurethane construction is lighter and more durable than rubber imitations in extreme weather conditions**
- **Universal safety colors alerting all type of traffic to the product's presence**
- **Satisfies state and federal regulatory agencies**
- **Customized solutions, including logos molded into the product**
- **Multiple channel options so each cable and hose can have its own dedicated channel**
- **Non-conductive material insulates and protects cords/cable, as well as people**

YELLOW JACKET SERIES 3-CHANNEL CABLE PROTECTORS are available with either standard or wide ramps. The wide ramp models have longer ramps that make it easier for vehicles to cross over. Both of these models have a hinged lid and they provide a safer crossing in high volume traffic areas while protecting valuable electrical cables and hose lines from damage. Modular interlocking design is ideal for use in industrial, commercial, and public applications. This cable protector

Material: UV Stabilized Polyurethane

- Protects cables and hoses up to 2.125" outside dia.
- The "original" cable protector
- Available with Standard or Wide ramps
- Dog Bone Connectors to extend to any desired length
- Thick lid and base allow for high volume of traffic
- Features a load capacity of 28,420 lb./Axle (12,892 kg).

⚠ WARNING: This product can expose you to chemicals including Carbon Black, Titanium Dioxide, Formaldehyde, and Benzyl Butyl Phthalate, which are known to the State of California to cause cancer and birth defects or other reproductive harm. For more information go to www.P65Warnings.ca.gov.



MODEL: YJ3-225

APPLICATIONS

- Civil Engineering and Construction
- Mining
- Military Sites
- Infrastructure and Utilities Maintenance
- Transmission
- Oil and Gas

ACCESSORIES

45° RIGHT TURN MODEL: YJ3TR-225



45° LEFT TURN MODEL: YJ3TL-225



END CAPS (Pair Only) MODEL: YJ3EB-225



Model	Length	Width	Height	Channel Width	Maximum Outside Diameter	Weight
YJ3-225	36 in. (91.4 cm)	18.5 in. (50.8 cm)	2.875 in. (7.3 cm)	2.125 in. (5.4 cm)	2.125 in. (5.4 cm)	34.15 lb. (15.5 kg)
YJ3-225W	34.75 in. (88.3 cm)	26.75 in. (67.9 cm)	3.25 in. (8.3 cm)	2.125 in. (5.4 cm)	2.125 in. (5.4 cm)	62.9 lb. (28.5 kg)
YJ3TL-225	23.5 in. (59.69 cm)	18.75 in. (47.63 cm)	2.875 in. (7.3 cm)	2.125 in. (5.4 cm)	2.125 in. (5.4 cm)	19 lb. (8.6 kg)
YJ3TR-225	23.5 in. (59.69 cm)	18.75 in. (47.63 cm)	2.875 in. (7.3 cm)	2.125 in. (5.4 cm)	2.125 in. (5.4 cm)	18.8 lb. (8.5 kg)
YJ3EB-225	Female: 8.25 in. (20.96 cm) Male: 8.375 in. (21.27 cm)	18.625 in. (50.17 cm)	3 in. (7.62 cm)	2.125 in. (5.4 cm)	2.125 in. (5.4 cm)	6.2 lb. (2.8 kg) 8.2 lb. (3.7 kg)



LINEBACKER®

620 Compton St
Broomfield, CO 80020

PHONE: (800) 438-9336

FAX: (720) 890-4858

EMAIL: sales@checkers-safety.com

www.linebacker-safety.com

A PRODUCT OF:



For more information visit: www.checkers-safety.com

Checkers Safety Group is committed to providing revolutionary product designs and visionary safety solutions that protect people, assets, and the environment.

CHECKERS' FAMILY OF BRANDS:

