

LINEBACKER®

CABLE MANAGEMENT

YELLOW JACKET SERIES AMS 5-CHANNEL CABLE PROTECTOR PRODUCT INFORMATION BROCHURE





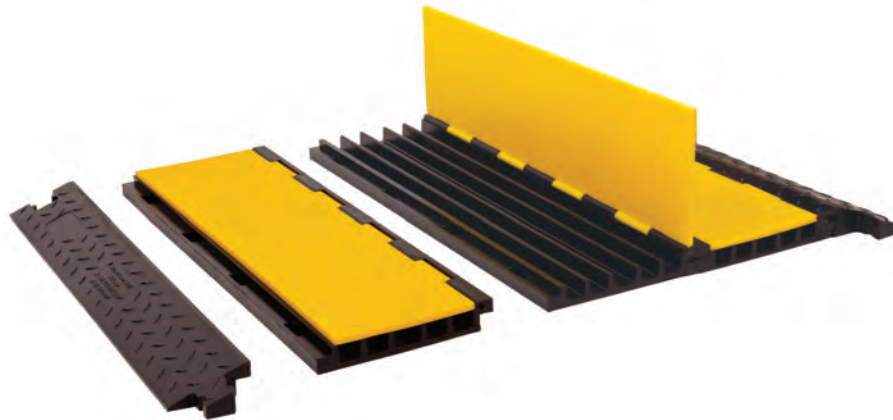
PICTURED: YJ5-125-AMS IN USE

Checkers' Linebacker Cable Management offers the most extensive line of high performance cable/hose protection products in the world. These durable cable protection systems provide a safer method of passage for pedestrian traffic, vehicles and heavy duty equipment while protecting valuable electrical cables, cords and hose lines from damage.

To fit the needs of a wide variety of applications, we offer lidded models, drop over models, open top models, and low profile models constructed from all-weather polyurethane. We also offer rubber duct models for light applications.

- **World's largest cable protector manufacturer**
- **Linebacker cable management systems are manufactured in the USA in Broomfield, CO**
- **We offer extensive accessories, such as ADA/DDA compliant access ramps, protector bridges, 45 & 90 turns and end caps**
- **Polyurethane construction is lighter and more durable than rubber imitations in extreme weather conditions**
- **Universal safety colors alerting all type of traffic to the product's presence**
- **Satisfies state and federal regulatory agencies**
- **Customized solutions, including logos molded into the product**
- **Multiple channel options so each cable and hose can have its own dedicated channel**
- **Non-conductive material insulates and protects cords/cable, as well as people**

YELLOW JACKET SERIES 5-CHANNEL AMS® (Advanced Modular System) is patented technology that utilizes separate cable protector sections and ramps to create a system that is fully expandable to hold an unlimited number of cables. By detaching the ramps, you can also quickly add cable runs and ADA compatible side ramps to existing systems. The Yellow Jacket AMS readily handles heavy truck and bus traffic while providing easy access for pedestrians, carts and wheelchairs. Hinged lids make for easy loading of cables and hoses.



Material: UV Stabilized Polyurethane

- Protects cables and hoses up to 1.25" outside dia.
- Connect unlimited center sections and add ramps
- Hourglass® Connectors to extend to any length
- 5 or 3 Channel Systems available
- Hinged lid for easy cable placement
- Features a load capacity of 32,600 lb./Axle (14,787 kg)

MODEL: YJ5-125-AMS

⚠️ WARNING: This product can expose you to chemicals including Carbon Black, Titanium Dioxide, Formaldehyde, and Benzyl Butyl Phthalate, which are known to the State of California to cause cancer and birth defects or other reproductive harm. For more information go to www.P65Warnings.ca.gov.

APPLICATIONS

- Civil Engineering and Construction
- Mining
- Industrial
- Infrastructure and Utilities Maintenance
- Heavy Duty
- Oil and Gas

COMPONENTS

RAMP

YJ5-125-AMS-M-B



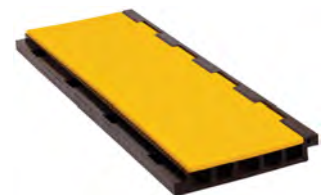
INTERCONNECT

YJ5I-125



AMS CENTER SECTION

YJ5-125-AMS-CTR



Model	Length	Width	Height	Channel Width	Maximum Outside Diameter	Weight
YJ5-125-AMS	36 in. (91.44 cm)	19.75 in. (50.17 cm)	2 in. (5.08 cm)	1.375 in. (3.49 cm)	1.25 in. (3.18 cm)	29.35 lb. (13.3 kg)
YJ5-125-AMS-CTR	36 in. (91.44 cm)	11.75 in. (29.85 cm)	1.875 in. (4.76 cm)	1.375 in. (3.49 cm)	1.25 in. (3.18 cm)	16.65 lb. (7.6 kg)
YJ5-125-AMS-F-B	36 in. (91.44 cm)	5.125 in. (13.02 cm)	2 in. (5.08 cm)	N/A	N/A	7.35 lb. (3.3 kg)
YJ5-125-AMS-M-B	36 in. (91.44 cm)	5 in. (12.7 cm)	2 in. (5.08 cm)	N/A	N/A	5.35 lb. (2.4 kg)
YJ5I-125	17.88 in. (45.4 cm)	19.75 in. (50.17 cm)	1.875 in. (4.76 cm)	1.375 in. (3.49 cm)	1.25 in. (3.18 cm)	M: 16 lb. (7.3 kg) F: 15.6 lb. (7.1 kg)



LINEBACKER®

620 Compton St
Broomfield, CO 80020

PHONE: (800) 438-9336

FAX: (720) 890-4858

EMAIL: sales@checkers-safety.com

www.linebacker-safety.com

A PRODUCT OF:



For more information visit: www.checkers-safety.com

A dynamic, global team dedicated to protecting people, assets, and the environment.

CHECKERS FAMILY OF BRANDS:

