

LINEBACKER®

CABLE MANAGEMENT

YELLOW JACKET SERIES 5-CHANNEL CABLE PROTECTOR PRODUCT INFORMATION BROCHURE





PICTURED: YJ5-125 IN USE)

Checkers' Linebacker Cable Management offers the most extensive line of high performance cable/hose protection products in the world. These durable cable protection systems provide a safer method of passage for pedestrian traffic, vehicles and heavy duty equipment while protecting valuable electrical cables, cords and hose lines from damage.

To fit the needs of a wide variety of applications, we offer lidded models, drop over models, open top models, and low profile models constructed from all-weather polyurethane. We also offer rubber duct models for light applications.

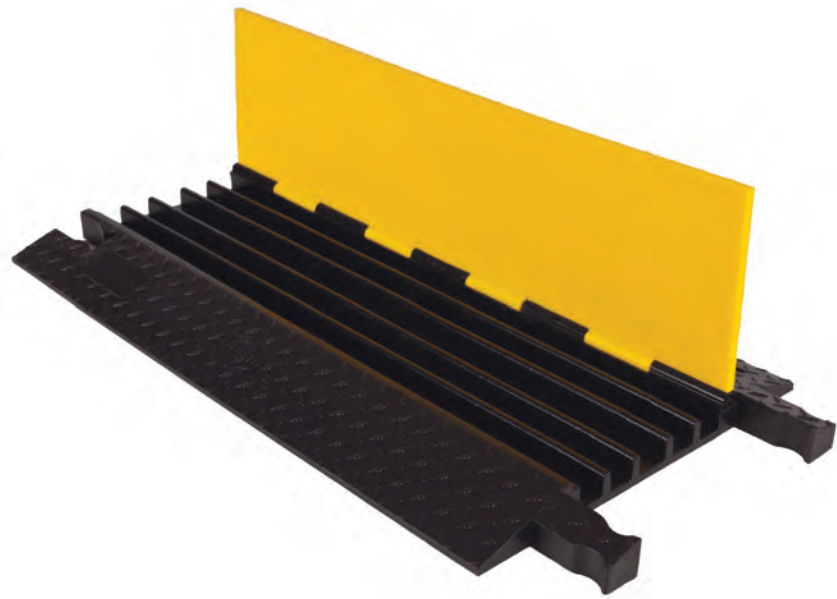
- **World's largest cable protector manufacturer**
- **Linebacker cable management systems are manufactured in the USA in Broomfield, CO**
- **We offer extensive accessories, such as ADA/DDA compliant access ramps, protector bridges, 45 & 90 turns and end caps**
- **Polyurethane construction is lighter and more durable than rubber imitations in extreme weather conditions**
- **Universal safety colors alerting all type of traffic to the product's presence**
- **Satisfies state and federal regulatory agencies**
- **Customized solutions, including logos molded into the product**
- **Multiple channel options so each cable and hose can have its own dedicated channel**
- **Non-conductive material insulates and protects cords/cable, as well as people**

5-CHANNEL CABLE PROTECTOR with hinged lid provides a safer crossing in high volume traffic areas while protecting valuable electrical cables and hose lines from damage. Modular interlocking design is ideal for use in industrial, commercial, and public applications.

Material: UV Stabilized Polyurethane

- Protects cables and hoses up to 1.0" outside dia.
- The "original" cable protector
- Dog Bone Connectors to extend to any desired length
- Thick lid and base allow for high volume of traffic
- Hinged lid for easy cable placement
- Features a load capacity of 32,600 lb./Axle (14,787 kg)

⚠ WARNING: This product can expose you to chemicals including Carbon Black, Titanium Dioxide, Formaldehyde, and Benzyl Butyl Phthalate, which are known to the State of California to cause cancer and birth defects or other reproductive harm. For more information go to www.P65Warnings.ca.gov.



MODEL: YJ5-125

APPLICATIONS

- Civil Engineering and Construction
- Mining
- Military Sites
- Infrastructure and Utilities Maintenance
- Transmission
- Oil and Gas

ACCESSORIES

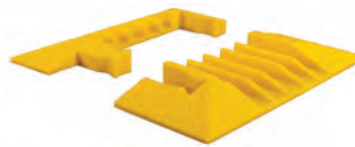
45° RIGHT TURN
MODEL: YJ5TR-125



45° LEFT TURN
MODEL: YJ5TL-125



END CAPS (Pair Only)
MODEL: YJ5EB-125



45° RIGHT TURN
MODEL: YJ5X-125



Model	Length	Width	Height	Channel Width	Maximum Outside Diameter	Weight
YJ5-125	36 in. (91.4 cm)	19.75 in. (50.2 cm)	1.875 in. (4.76 cm)	1.375 in. (3.49 cm)	1 in. (2.54 cm)	28.2 lb. (12.8 kg)
YJ5TR-125	24 in. (61 cm)	19.75 in. (50.2 cm)	1.875 in. (4.76 cm)	1.25 in. (3.18 cm)	1.325 in. (3.37 cm)	14.2 lb. (6.4 kg)
YJ5TL-125	24 in. (61 cm)	19.75 in. (50.2 cm)	1.875 in. (4.76 cm)	1.25 in. (3.18 cm)	1.325 in. (3.37 cm)	14.2 lb. (6.4 kg)
YJ5EB-125	Female: 7.375 in. (18.7 cm) Male: 4.25 in. (10.8 cm)	20 in. (50.8 cm)	1.875 in. (4.76 cm)	1.25 in. (3.18 cm)	1.125 in. (2.86 cm)	4.05 lb. (1.8 kg) 3.45 lb. (1.6 kg)
YJ5X-125	28.5 in. (72.4 cm)	24.5 in. (62.2 cm)	1.875 in. (4.76 cm)	1.339 in. (3.4 cm)	1.325 in. (3.37 cm)	23.1 lb. (10.5 kg)



LINEBACKER®

620 Compton St
Broomfield, CO 80020

PHONE: (800) 438-9336

FAX: (720) 890-4858

EMAIL: sales@checkers-safety.com

www.linebacker-safety.com

A PRODUCT OF:



For more information visit: www.checkers-safety.com

A dynamic, global team dedicated to protecting people, assets, and the environment.

CHECKERS FAMILY OF BRANDS:

